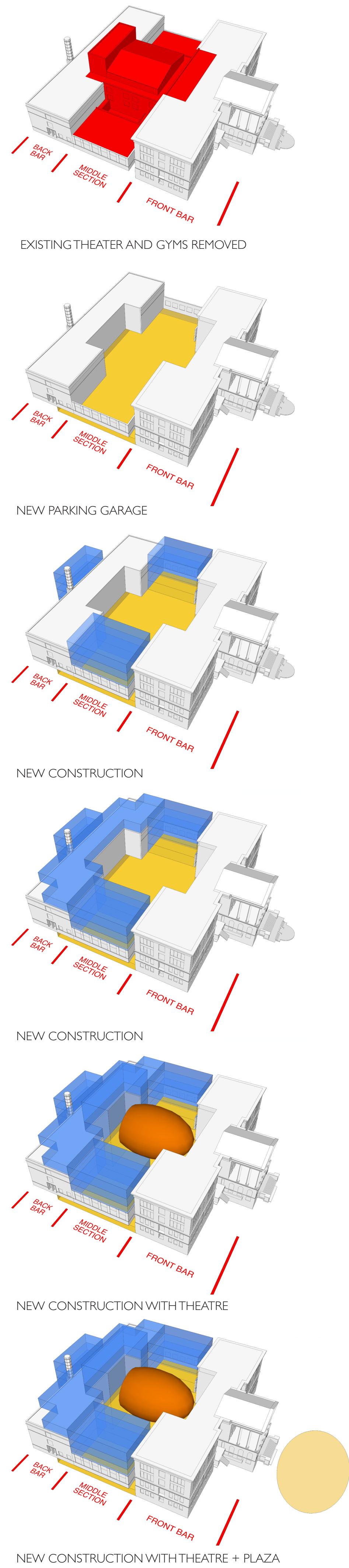


“My attitude is never to be satisfied, never enough, never.”
Duke Ellington

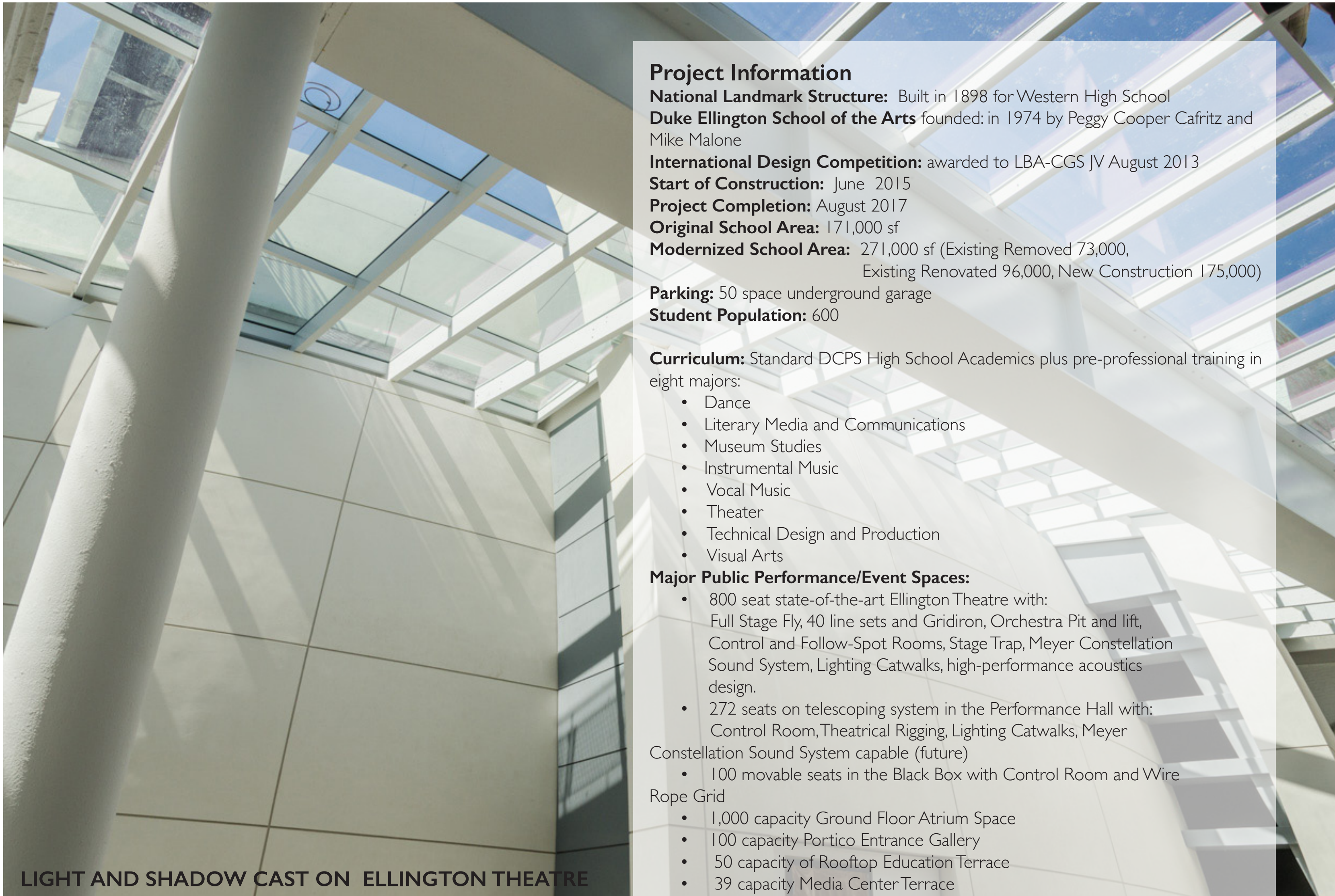
Modernization of the
Duke Ellington School of the Arts



Project Narrative

Won in an international design competition in 2013, the LBA-CGS JV and GCS Design Build Team was challenged to transform this aging historic National Landmark through a comprehensive modernization into the nation's premier facility that will finally match The Duke Ellington School of the Art's national reputation. The design finds the balance between restoring and respecting the historic fabric, while creating major new academic and performance venues, and expanding the existing complex by 100,000 sf. The "Arts Machine" design seeks to express and expose what goes on inside, promoting interdepartmental awareness and collaboration, while offering many diverse venues to invite the DC Community in to experience the fruits of its pre-professional training programs. The academic and arts environment revolves around a four-story sky-lit atrium, with the new iconic 800-seat Duke Ellington Theatre's "egg" suspended in the middle as the institution's metaphoric heart. The historic fabric of the existing original structures were meticulously restored and, in many cases, replicated new where missing. The original high school classroom spaces were efficiently utilized to accommodate the more conventional Academic curriculum spaces. New construction - expressed in contemporary design and materials to differentiate from original structure - is woven in and around the restored historic buildings with the all-new middle section and rear addition able to accommodate the large and tall studios, performance and rehearsal spaces that are required for an Arts School of this caliber. Exterior amenities such as the outdoor Entrance Plaza placed at the top of the restored historic front lawn, the Media Center Terrace sheltered under the grand two-story portico and the Education Terrace on the Ellington Theatre Roof with its spectacular views across the city, all contribute to its expression of revitalization.





Project Information

National Landmark Structure: Built in 1898 for Western High School
Duke Ellington School of the Arts founded: in 1974 by Peggy Cooper Cafritz and Mike Malone

International Design Competition: awarded to LBA-CGS JV August 2013

Start of Construction: June 2015

Project Completion: August 2017

Original School Area: 171,000 sf

Modernized School Area: 271,000 sf (Existing Removed 73,000, Existing Renovated 96,000, New Construction 175,000)

Parking: 50 space underground garage

Student Population: 600

Curriculum: Standard DCPS High School Academics plus pre-professional training in eight majors:

- Dance
- Literary Media and Communications
- Museum Studies
- Instrumental Music
- Vocal Music
- Theater
- Technical Design and Production
- Visual Arts

Major Public Performance/Event Spaces:

- 800 seat state-of-the-art Ellington Theatre with: Full Stage Fly, 40 line sets and Gridiron, Orchestra Pit and lift, Control and Follow-Spot Rooms, Stage Trap, Meyer Constellation Sound System, Lighting Catwalks, high-performance acoustics design.
- 272 seats on telescoping system in the Performance Hall with: Control Room, Theatrical Rigging, Lighting Catwalks, Meyer Constellation Sound System capable (future)
- 100 movable seats in the Black Box with Control Room and Wire Rope Grid
- 1,000 capacity Ground Floor Atrium Space
- 100 capacity Portico Entrance Gallery
- 50 capacity of Rooftop Education Terrace
- 39 capacity Media Center Terrace

Academic Spaces:

- 26 Classrooms for Math, World Languages, Social Studies, English and Science

Major Arts Spaces:

- Professional-level Recording Studio and Control Room
- 100 seat Wind Band and Orchestra Rehearsal Studios
- Jazz and Percussion Labs
- String Ensemble Rehearsal Studio
- 120 seat Choir Rehearsal Room
- Show Choir Studio
- 6 Piano, Opera and Music Theory Labs/Classrooms
- 22 Sound Isolation Practice Rooms
- 8 Sound Isolation Lesson Studios
- 3 Vocal Technique Studios
- Opera Workshop Studio
- 6 Dance Studios and Classrooms
- 8 Tech Design & Production Workshops, Studios and Classrooms
- 9 Museum Studies/Literary Media & Communications Labs and Classrooms
- 3 Video, Film and Editing Labs
- 3 2-D Art Studio's
- 1 3-D Art Studio
- Costume Shop with Costume Conveyor Storage System
- Scene Shop
- Instrument Repair Shop
- 2 Green Rooms
- 2 Music Libraries
- VIP Guest Suite

Other Spaces:

- Fitness/Aerobics Center
- Media Center
- 300 seat Cafeteria with Full Service Kitchen & Servery
- Art Collection Storage with special fire protection & security
- Health Center



ELLINGTON THEATRE HEAVY STEEL CONSTRUCTION



LEED GOLD-GREEN ROOF & PV CELLS (FUTURE)



GREY WATER CISTERNS



TYPICAL CLASSROOM



COMPETITION RENDERING OF ATRIUM



THEATRE AND ATRIUM UNDER CONSTRUCTION

Project Teams:

Mayor

Muriel Bowser

Deputy Mayor for Education

Jennifer Nile

Council member

Jack Evans, Ward 2

2E01 Advisory Neighborhood Commissioner

Ed Solomon

DC Department of General Services

Greer Johnson Gillis, PE, Director

Spencer Davis, Chief Operating Officer

Jerome Fletcher, Chief of Staff

JoCole Burton, Project Delivery Manager

Jeff Bonvehio, Deputy Director, Capital Construction

Allam Al-Alami, Project Manager

Project Management Consultants

McKissack & McKissack

DC Public Schools

Antwan Wilson, Chancellor of DC Public Schools

Duke Ellington School of the Arts

Peggy Cooper Cafritz, Co-Founder

Mike Malone, Co-Founder (in memoriam)

Charles Barber, President (Ellington School of the Arts Project)

Sandi Logan, Interim Head of School

Ronald Lee Newman, Director of Operations

Design Builder

GCS - SIGAL, LLC

Architects

LBA-CGS JV

cox graae + spack architects:

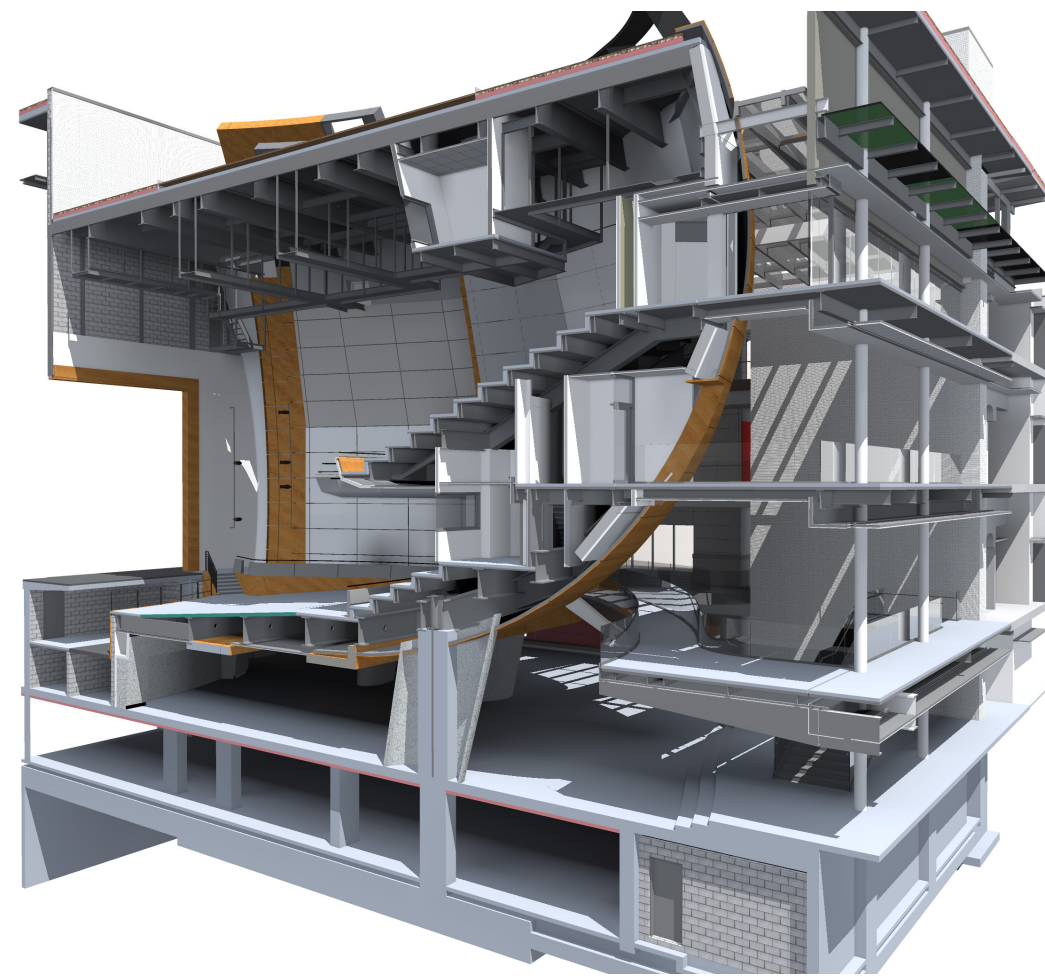
Christoffer Graae, FAIA, Principal-in-Charge/Director of Design;

Christopher Ambridge, AIA, Sr. Design Architect; Derek Banocy,

AIA, Sr. Project Architect

Lance Bailey & Associates:

Ansar Burney, AIA, Project Manager; Louis Fry III, AIA, Project Architect



SECTION CUT FROM 3-D MODEL

Modernization of the

Duke Ellington School of the Arts



GCS INC.



DISTRICT OF COLUMBIA
PUBLIC SCHOOLS

McKISSACK
McKISSACK



August 15, 2017