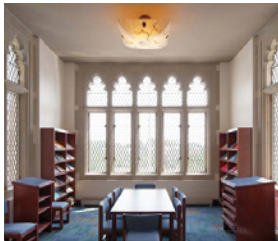


cox graae + spack architects



Eastern Senior High School

Washington, DC

cox graae + spack architects, as part of a joint venture, performed a complete restoration of historic Eastern Senior High School's building envelope. Originally constructed in 1923 and designed in an ornate Collegiate Gothic style, Eastern was in disrepair when DCPS sought to perform a complete restoration and modernization of the school. **cox graae + spack** architects provided historical research, detail design and procedural specifications to ensure a historically sensitive restoration. Masonry and stone surfaces were cleaned and repaired. New energy-efficient windows were installed to replicate the original units. A new historically accurate canopy was designed to replicate the original.

Services: Historic Preservation
Completion: 2010
Area: 300,000 gsf